

Lynx Pressure System

Your partner for progress



HAWK

TRIPLEX PLUNGER PUMPS & SYSTEMS



HIGH PRESSURE TRIPLEX PLUNGER PUMPS & SYSTEMS

NHD Model Selection Chart:

MODEL	FLOW		PRESSURE		POWER	
	LPM	GPM	PSI	BAR	HP	KW
NHD	8.5	2.25	1740	120	3	2.23
			1160	80	2	1.49
NHD	10	2.64	2900	200	5	4
NHD	12	3	2175	150	5	4
			1520	105	4	3
			1160	80	3	2.23

NHD Pump Technical Chart:



Plunger	: Ceramic (<0.25Ra)
Cylinder	: Forged Brass
Crankshaft	: Forged, Hardened & Ground Alloy Steel
Main Body	: High Strength Aluminum Alloy Die Casted
Valve Assembly	: Stainless Steel
Plunger Seal	: Durable Fiber- Impregnated BUNA-N-SEAL
Built in Drive	: No
Perm. Temp.	: 55°C
Pump Oil	: 20W-40

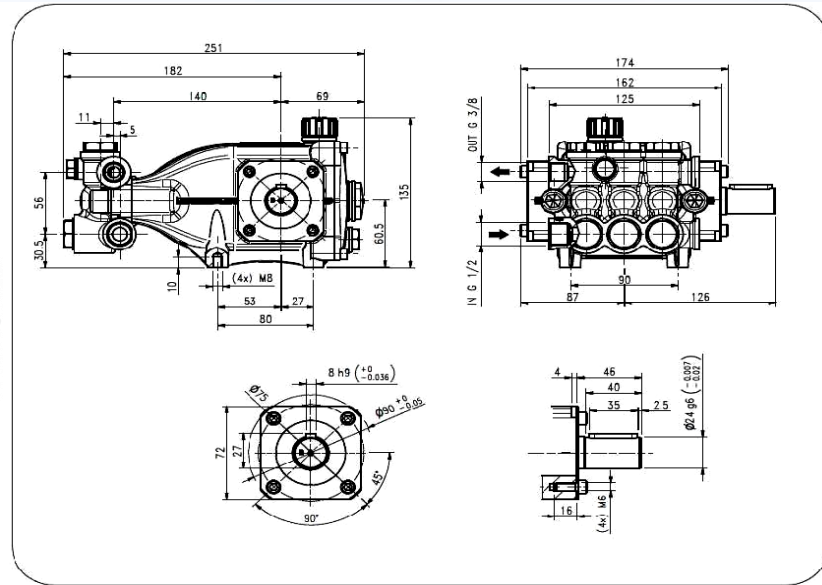
Scope of Accessories:

- ◆ Base-frame / Trolley mounted frame
- ◆ DOL Starter
- ◆ Unloader Valve / Regulating Valve
- ◆ Filter, Coupling, Pressure Gauge
- ◆ With/Without Trigger Water Gun
- ◆ High Pressure Water Hose Pipe
- ◆ Rigid Lance, Nozzles
- ◆ Foam Bottle for vehicle wash

Suitable Applications:

- ◆ Hydro-Test of Boilers / Valves / Heat Exchangers / Tubes & Pipes / Tank
- ◆ Solar Panel, Wall & Floor Cleaning
- ◆ Rust & Dust removing purpose
- ◆ Chemical Drum Cleaning
- ◆ Car & Heavy vehicle Washing
- ◆ Automobiles & Ancillary parts
- ◆ Filter cleaning in Textile industries
- ◆ Many more...

NHD Bare Pump Design:



Salient Features:

- ◆ Appropriate pump speed for high service life.
- ◆ Top open power frame for easy maintenance.
- ◆ It's a direct couple system.



+91-9909983982

+91-9978974666



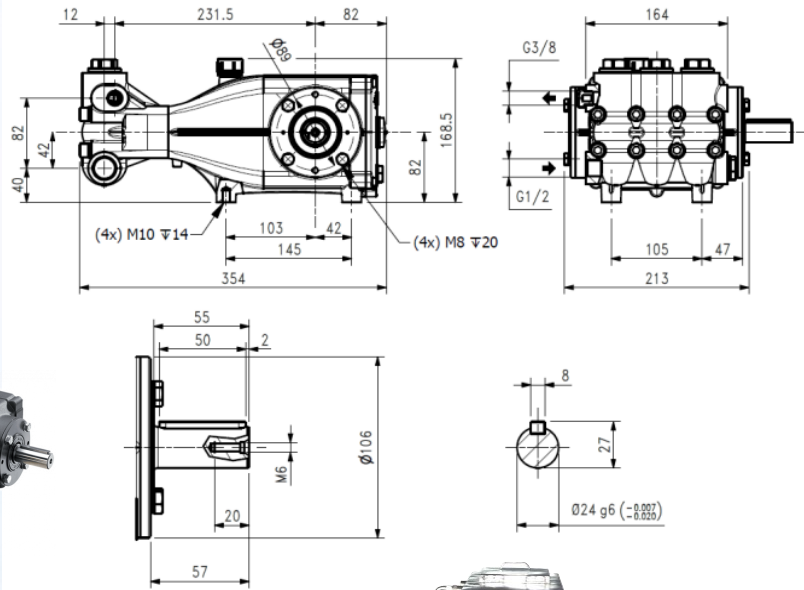
24/7

+91-9510254254

PXI Series Pump Selection Chart:

MODEL	FLOW		PRESSURE		POWER	
	LPM	GPM	PSI	BAR	HP	KW
PXI	11	3	5075	350	10	7.45
PXI	15	4	7250	500	20	15
			5440	375	15	11.18
			4715	325	12.5	9.32
PXI	17	4	5075	350	15	11.18
			3990	275	12.5	9.32
PXI	21	6	5075	350	20	15
PXI	21	6	7250	500	30	22.37
			5800	400	25	19
			4785	330	20	15
MPX	30	8	7250	500	40	30

PXI Bare Pump Design:



PXI Series Technical Chart:

Plunger	: Ceramic (<0.25Ra)
Cylinder	: Forged Brass
Crankshaft	: Forged, Hardened & Ground Alloy Steel
Main Body	: High Strength Aluminum Alloy Die Casted
Valve Assembly	: Stainless Steel
Plunger Seal	: Durable Fiber- Impregnated BUNA-N-SEAL
Built in Drive	: No
Perm. Temp.	: 55°C
Pump Oil	: 20W-40



Scope of Accessories:

- ◆ Base-frame / Trolley mounted frame
- ◆ Electric Motor / Control Panel
- ◆ Unloader Valve / Regulating Valve
- ◆ Filter, Coupling, Pressure Gauge
- ◆ With Trigger Water Gun
- ◆ High Pressure Water Hose Pipe
- ◆ Tube Cleaning Nozzles
- ◆ SS Rigid Lance / Flexible Lance
- ◆ Sand Blasting Attachment



Suitable Applications:

- ◆ Hydro-Test of Boilers / Valves / Heat Exchangers / Tubes & Pipes / Tank
- ◆ Hydro Jetting , Wet Sand Blasting
- ◆ Hydro Demolition, Paint Removal
- ◆ Rust & Dust removing purpose
- ◆ Industrial Tube Cleaning
- ◆ Automobiles & Ancillary parts
- ◆ Filter, Machinery cleaning
- ◆ Many more...

Salient Features:

- ◆ Appropriate pump speed for high service life.
- ◆ Top open power frame for easy maintenance.
- ◆ It's a direct couple system.



+91-9909983982
+91-9978974666



24/7

+91-9510254254

XLT Pump Selection Chart:

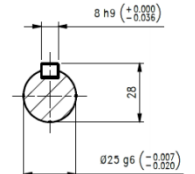
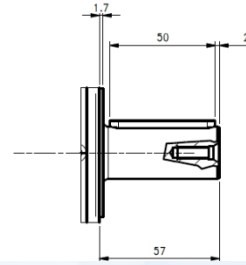
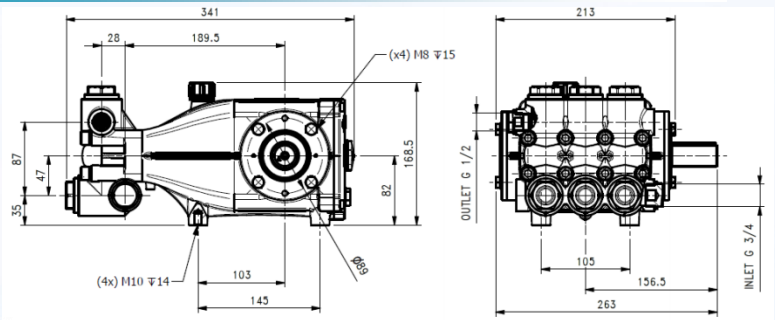
MODEL	FLOW		PRESSURE		POWER	
	LPM	GPM	PSI	BAR	HP	KW
XLT	18	5	4350	300	15	11.18
XLT	25	7	4350	300	20	15
XLT	40	11	2465	170	20	15
			2030	140	15	11.18
XLT	50	13	2175	150	20	15
			1595	110	15	11.18
			1305	90	12.5	9.32

XLT Technical Chart:

Plunger	: Ceramic (<0.25Ra)
Cylinder	: Forged Brass
Crankshaft	: Forged, Hardened & Ground Alloy Steel
Main Body	: High Strength Aluminum Alloy Die Casted
Valve Assembly	: Stainless Steel
Plunger Seal	: Durable Fiber- Impregnated BUNA-N-SEAL
Built in Drive	: No
Perm. Temp.	: 55°C
Pump Oil	: 20W-40



XLT Bare Pump Design:



Scope of Accessories:

- ◆ Base-frame / Trolley mounted frame
- ◆ Electric Motor, Electric Control Panel
- ◆ Unloader Valve / Regulating Valve
- ◆ Filter, Coupling, Pressure Gauge
- ◆ With/Without Trigger Water Gun
- ◆ High Pressure Water Hose Pipe
- ◆ Rigid Lance, Nozzles



Suitable Applications:

- ◆ Hydro-Test of Boilers / Valves / Heat Exchangers / Tubes & Pipes / Tank
- ◆ Wall, Floor, Warehouse Cleaning
- ◆ Rust & Dust removing purpose
- ◆ Filter Cleaning in Textile Industry
- ◆ Heavy vehicle Washing
- ◆ Automobiles & Ancillary parts
- ◆ Sewer Jetting
- ◆ Many more...

Salient Features:

- ◆ Appropriate pump speed for high service life.
- ◆ Top open power frame for easy maintenance.
- ◆ It's a direct couple system.



+91-9909983982
+91-9978974666



24/7

+91-9510254254

XXT Pump Selection Chart:

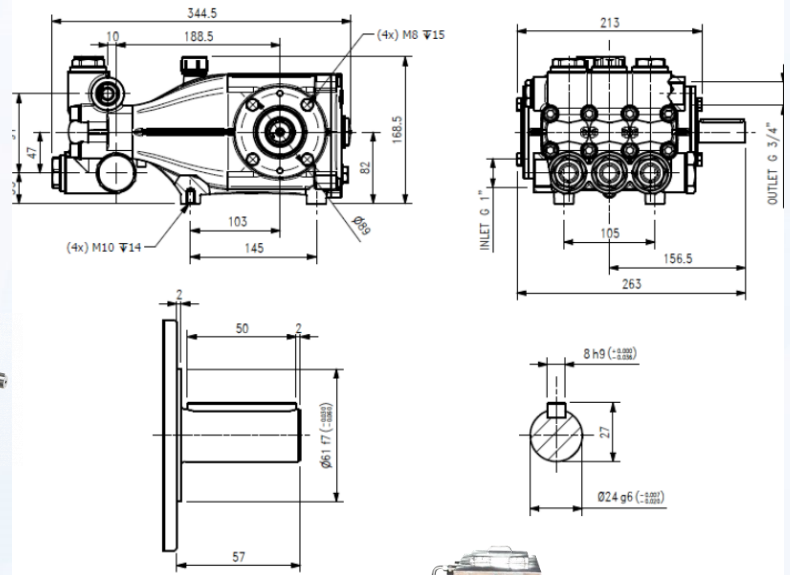
MODEL	FLOW		PRESSURE		POWER	
	LPM	GPM	PSI	BAR	HP	KW
XXT	42	11	2900	200	25	19
			1740	120	15	11.18
XXT	55	15	2900	200	30	22.37
			2540	175	25	19
XXT	70	18	2175	150	30	22.37

XXT Technical Chart:

Plunger	: Ceramic (<0.25Ra)
Cylinder	: Forged Brass
Crankshaft	: Forged, Hardened & Ground Alloy Steel
Main Body	: High Strength Aluminum Alloy Die Casted
Valve Assembly	: Stainless Steel
Plunger Seal	: Durable Fiber- Impregnated BUNA-N-SEAL
Built in Drive	: No
Perm. Temp.	: 55°C
Pump Oil	: 20W-40



XXT Bare Pump Design:



Scope of Accessories:

- ◆ Base-frame / Trolley mounted frame
- ◆ Electric Motor, Electric Control Panel
- ◆ Unloader Valve / Regulating Valve
- ◆ Filter, Coupling, Pressure Gauge
- ◆ With/Without Trigger Water Gun
- ◆ High Pressure Water Hose Pipe
- ◆ Rigid Lance, Nozzles



Suitable Applications:

- ◆ Hydro-Test of Boilers / Valves / Heat Exchangers / Tubes & Pipes / Tank
- ◆ Wall, Floor, Warehouse Cleaning
- ◆ Rust & Dust removing purpose
- ◆ Filter Cleaning in Textile Industry
- ◆ Heavy vehicle Washing
- ◆ Automobiles & Ancillary parts
- ◆ Sewer Jetting
- ◆ Many more...

Salient Features:

- ◆ Appropriate pump speed for high service life.
- ◆ Top open power frame for easy maintenance.
- ◆ It's a direct couple system.



+91-9909983982

+91-9978974666




24/7


+91-9510254254



Lynx Pressure System

Your partner for progress

 Survey No. 242/3, FP-2/3, Plot No. 2, Panchratna Industrial Estate, Nr. Ramol Bridge, Ramol, Ahmedabad - 382445, Gujarat, India.

 +91-9909983982,
+91-9978974666

 sales@lynxpressuresystem.com

 www.lynxpressuresystem.com

